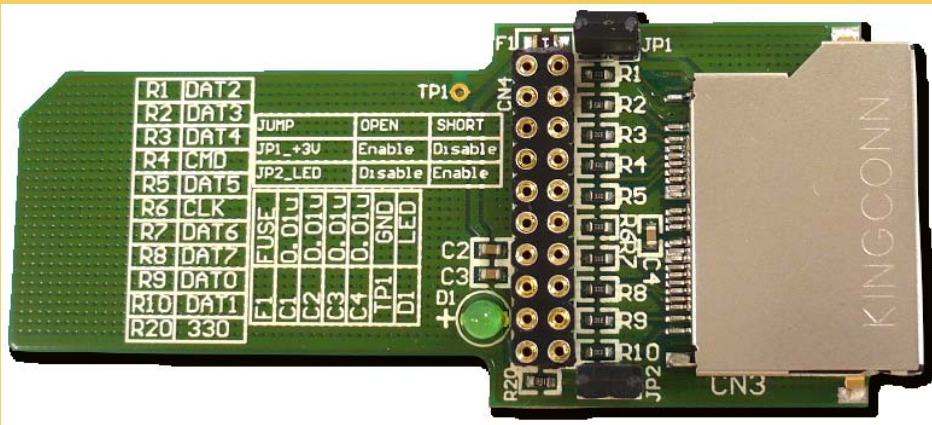


SD Extender 1.0

Secure Digital Memory Card Extender



The SD Extender 1.0 is a debug and signal detection tool for Secure Digital Memory Card. It allows a Secure Digital Memory Card to be extended from the host slot for full access to the all of signal pins.

It's especially designed to save valuable labor and time in the production environment. The SD extender 1.0 is designed to minimize the signal degradation effects of the extender by proven design techniques. Separate Vcc and ground planes provide a low inductance path to the host's power supply.

The SD extender has the function of over-current protection with PTC fuse. A clearly marked jumper header allows probing of all of signal pins. It's also a powerful tool for engineers, or use for factory test protection.

The SD extender is constructed of high quality components for years of trouble free service.

Key Features

- Test connector for all of signal and power pins
- Any signal can be isolated with jumper block
- Power and ground can be isolated for power measurements
- LED indicates power status
- Adds dumping resistors for all of signals
- Vcc bypassed for clean power
- Supports both Secure Digital Memory Cards and MMC cards
- High quality connectors for long service life
- Over-current protection with PTC fuse
- Passive adapter unnecessary



Product Specifications

Dimension: Width 32mm Length 71.50mm Thickness 1.4mm Min

Support Card Type: MMC & Micro MMC & MMCplus & MMCmobile & RS-MMC & SD & Micro SD & Mini SD & SD HC

As a New manufacturer of quality computer connectivity products since 2009/Mar, BPLUS technology brings to market a broad range of upgrade products. These products bridge the connection between Desktop/Notebook systems and external peripherals.

Bplus
Bplus Technology

Address: 5F, NO. 63, ZHOU-TZYY
ST., NEI-HU, TAIPEI, TAIWAN, R.O.C
Tel: 886-2-77210550 Fax: 886-2-87974200
Email: sales@hwtools.net
Web: http://www.HWtools.net