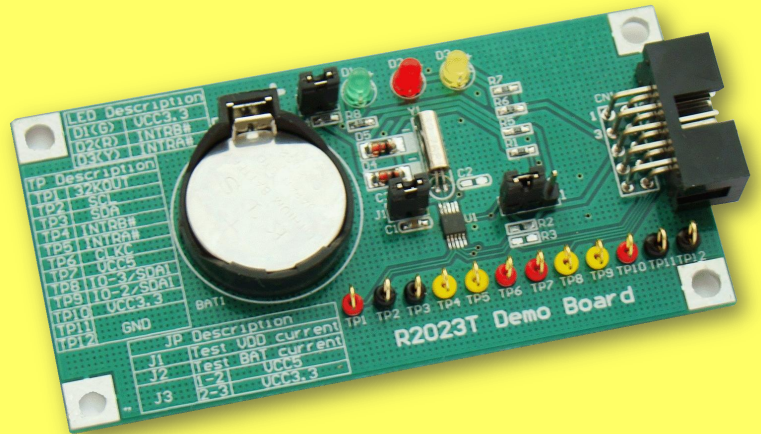


R2023T Real Time Clock Demo Board

Need to add a Real Time Clock to your project, then our R2023T Real Time Clock Demo Board is the ideal solution. This compact, easy to install demo-board uses the standard I²C bus for control and data transfer.

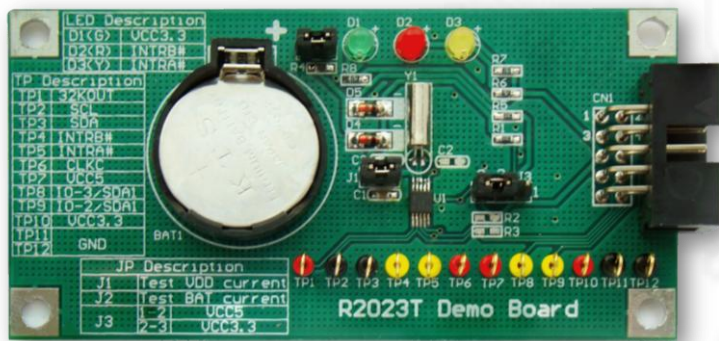
The time is maintained and updated within the R2023T IC. Included on-board is also battery back-up, enabling the time to be maintained even with power disconnected from the board. The R2023T IC stores time values in separate registers, for years, month, week, day, hour, minutes and seconds. A special register is also available for storing of alarm values. Refer to the R2023T datasheet below for more information.

The new R2023T Real Time Clock Demo Board is a compact, easy to control Real Time Clock, ideal for use when setting up a real-time control system or for use when date stamping is required for various monitoring applications.



Key Features

- Includes RICOH Semiconductor R2023T Real Time Clock
- On-Board Battery Back-Up
- Standard I²C Bus Control Connection
- Easily Add a Real Time Clock to your Project
- Compact and Easy To Mount Board
- Ideal for use with our Development and Control Boards

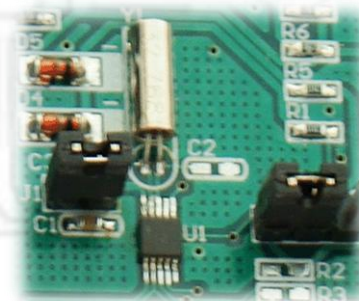


Product Specifications

Dimension:

Width : 42mm

Length : 85mm



As a New manufacturer of quality computer connectivity products since 2009/Mar, BPLUS technology brings to market a broad range of upgrade products. These products bridge the connection between Desktop/Notebook systems and external peripherals.

Bplus
Bplus Technology

Address: 5F, NO.63, ZHOU-TZYY
ST., NEI-HU, TAIPEI, TAIWAN, R.O.C
Tel: 886-2-77210550 Fax: 886-2-87974200
Email: sales@hwtools.net
Web: http://www.HWtools.net