

## MP220

SDXC UHS-I & SDIO2.0/1.8V PCIe Reader

Product > SD,SDIO Card Reader > MP220



### First Impression

SD card to PCIe Add-on card adapter design for both high speed SD3.0/SDXC/UHS-I cards and SDIO2.0/IO1.8V cards by selecting on-board EEPROMs by slide switch.

Besides, as 1.8V LDO is on board, not only 3.3V but also 1.8V can be applied to SD Card power by jumper.

You can easily add SD card to your Desktop PC PCI-E slot for testing not only normal SD/SDXC/UHS-I card, but also special SDIO card with **1.8V I/O signaling**.

### Specification

- Compliant with PCI Express Base Specification rev 1.1
- Compliant with SDIO Card Specification 2.0 with I/O signaling 1.8V
- Compliant with SD Memory Card Specification Ver 3.0
- Supports Ultra High Speed Type I (UHS-I)
  1. Supports DS/HS/SDR12/SDR25/SDR50/SDR104 operation modes
  2. Supports Ultra High Speed SD Clock (Max. frequency is 200MHz)
- Supports variable sampling clock for SDR50 and SDR 104 (Tuning command)
- Supports SD Extended Capacity (SDXC)
- Support SD High Capacity (SDHC)
- Compliant with SD Host Controller Standard Specification Version 3.0
- Compliant with MMC MultiMediaCard Specification Version 4.1
- Supports MMC Plus and MMC Mobile. (4bit only)
- Operation current is 800mA for SD UHS-I
- Integrate 3.3v-to-3.3v/1.8v power switch for SDA3.0 IO power
- Design two EEPROM for SD3.0/SDXC/UHS-I and SDIO2.0/IO=1.8V mode select, it can select by SW1.
- Design dual SD card power : 1.8V & 3.3V – JP1 & JP2

## System Requirements:

- ◆ PCI-E slot

### Notice:

- To use SD / SDHC / SDXC Cards on Windows XP/VISTA/7 your system requires install RICOH private driver for more compatibility (download here). Otherwise your SD cards can't work properly.
- To use SD / SDHC / SDXC Memory Card Formatting Software, Please download file from SDCARD.org web-site as below:  
[https://www.sdcard.org/downloads/formatter\\_4/](https://www.sdcard.org/downloads/formatter_4/)  
 Please backup your data before using the formatting program.
- SDIO 2.0/IO=1.8V mode is for special usage for such as testing SDIO WiFi card with 1.8V I/O signaling.  
 So, when SW1=2-3, normal SD card cannot be recognized.  
 For normal SD cards of SDIO2.0 or SD2.0 with 3.3V I/O signaling, please purchase MP230.

### SW1: EEPROM Selection

- 1-2: SD3.0/SDXC/UHS-I
- 2-3: SDIO2.0/IO Signaling=1.8V

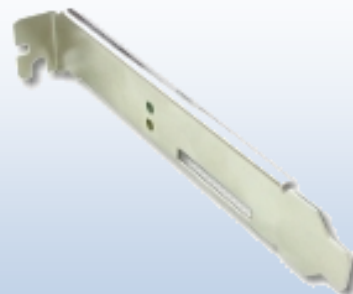
### JP1 & JP2: SD POWER

SD Power	JP1	JP2
3.3V	1-2	1-2
1.8V	1-2	2-3
External input	JP1.2: VCC JP1.3: GND	N/A

## MP220 Package Contents



**MP220**  
SDXC UHS-I & SDIO2.0/1.8V PCIe Reader x1



**JP1037**  
(Standard Height PCI Express bracket) x1