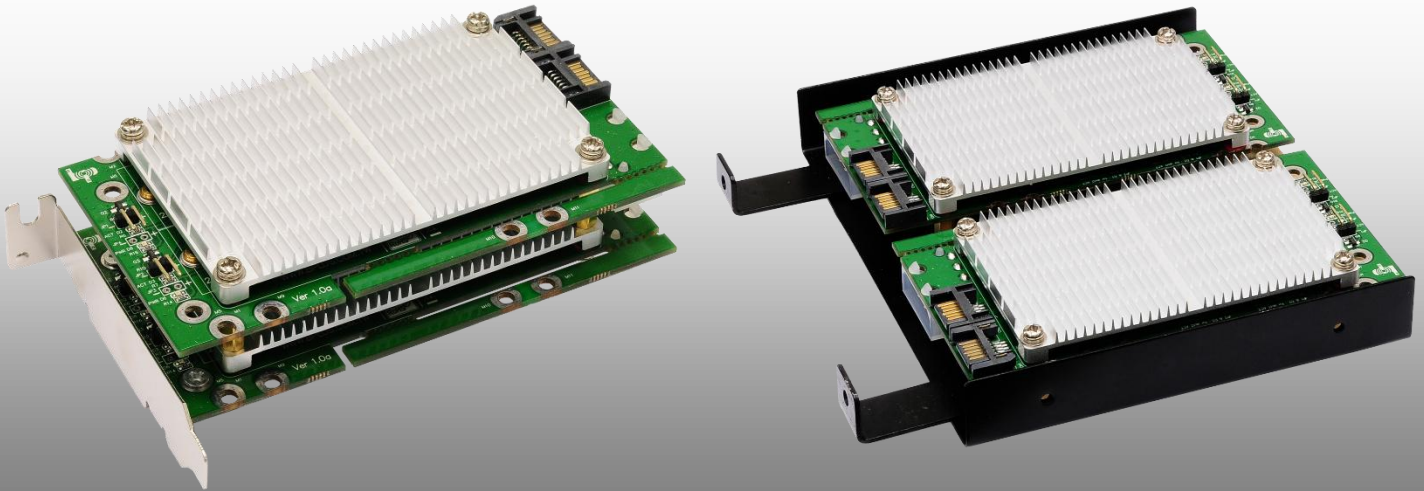


M2S4C

Quad M.2 (NGFF) SSD to SATA RAID Adapter

Product > M.2 (NGFF) interface > M2S4C



Function

- ◆ Allows user to use standard SATA-IO M.2 SATA SSD to SATA hard drive in the Desktop.
- ◆ Support Hi-Speed SATA3 / 6Gbps mass storage interface.
- ◆ Support software RAID 0/1/5/10.
- ◆ Support OS RAID and Mother-Board RAID 0/1/5/10.
- ◆ PCB board can be stacking.

Specification

- ◆ M.2 Specification Revision 1.0
- ◆ Serial ATA Spec. Reversion 3.2
- ◆ Support 2230 / 2242 / 2260 / 2280 type M.2 Card dimension.
- ◆ Support M.2 Socket 2 SATA-based SSD Module.
- ◆ Support M.2 Key B Card Type.

System Requirements:

- ◆ Desktop PC with an available SATA slot.
- ◆ Available PCIe slot/2.5" herd driver space/3.5"herd driver space.
- ◆ Windows, Vista 32/64, Windows 7, Windows 8, Windows server 2008/2010/2012 or Linux.

Dimension & Weight(PCB board):

- ◆ 120mm * 64mm * 16mm ; 40g

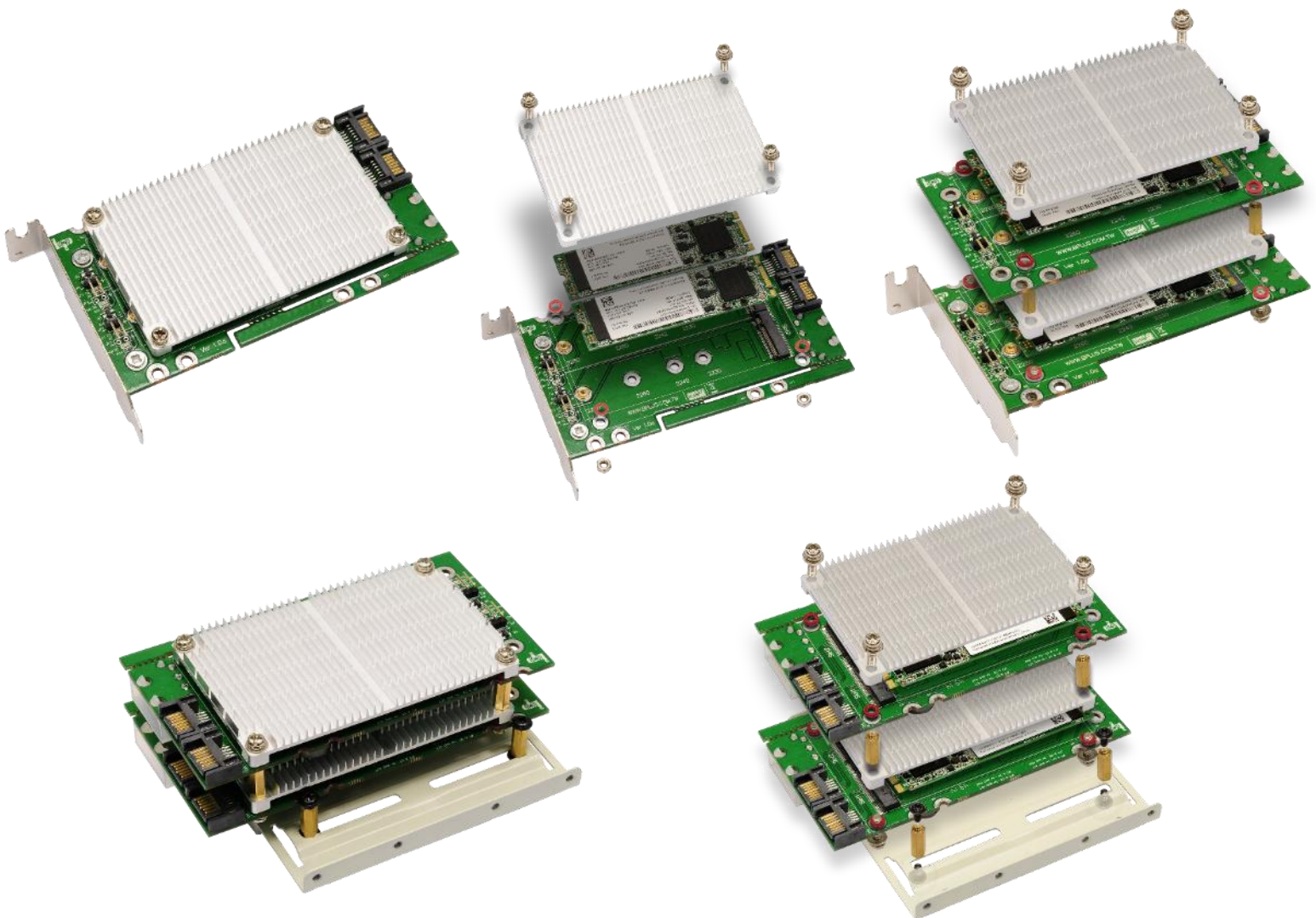
Certification:

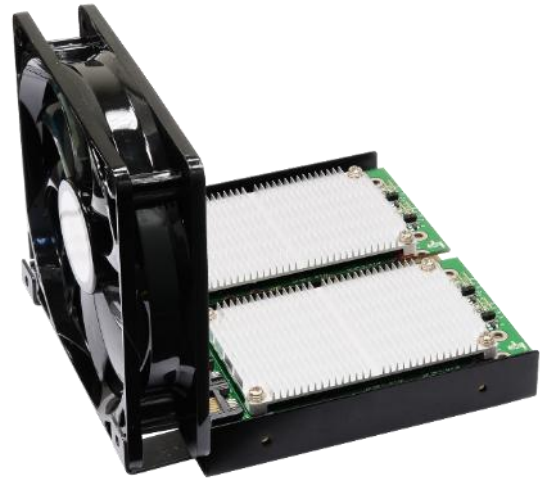
- ◆ RoHs

Operating Temperature

- ◆ 0 ~ 70°C

Use Case





Note: The above figure red gasket must be installed, otherwise it will likely cause damage SSD modules

RAID0 Performance:

Test	Read [MB/s]	Write [MB/s]
Seq	1059	743.8
512K	904.0	724.1
4K	31.37	101.3
4K QD32	594.8	508.0

RAID1 Performance:

Test	Read [MB/s]	Write [MB/s]
Seq	634.3	175.9
512K	531.7	149.9
4K	21.29	94.57
4K QD32	342.2	159.5

RAID1

RAID0

RAID5 Performance:

Test	Read [MB/s]	Write [MB/s]
Seq	946.2	129.7
512K	695.9	109.9
4K	30.39	17.59
4K QD32	453.7	94.72

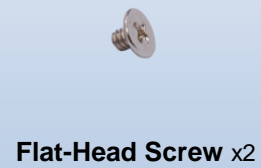
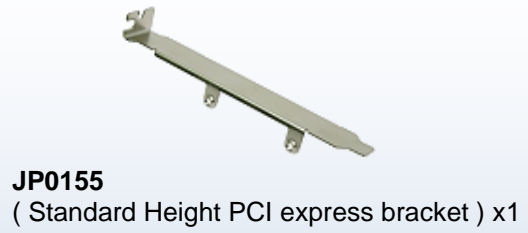
RAID5

RAID10 Performance:

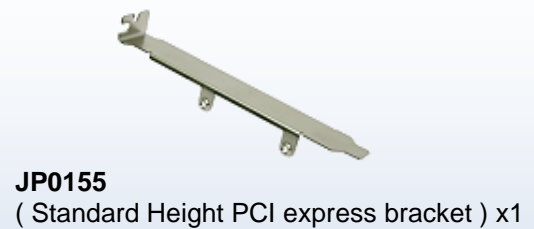
Test	Read [MB/s]	Write [MB/s]
Seq	1038	252.0
512K	894.6	245.7
4K	29.17	93.37
4K QD32	421.9	227.7

RAID10

M2S4C-2 Package Contents



M2S4C-4 Package Contents



M2S4C-CT43 Package Contents



M2S4C-CT43
(Dual M.2 to SATA Adapter) x1



CT43 Bracket Accessory Kit x1



Y07-S02-035
(SATA3 cable 35cm) x4



Flat-Head Screw x4

M2S4C-CT45 Package Contents



M2S4C-CT45
(Dual M.2 to SATA Adapter) x1



CT45 Bracket Accessory Kit x1



Y07-S02-035
(SATA3 cable 35cm) x4



Flat-Head Screw x4