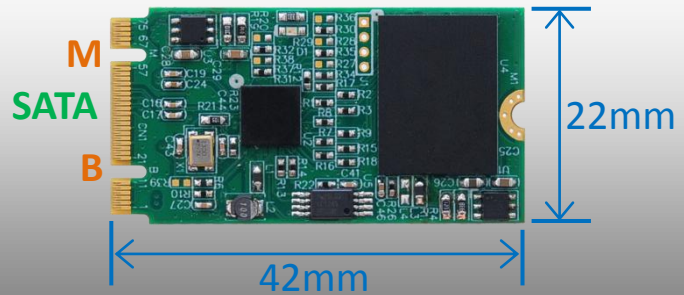
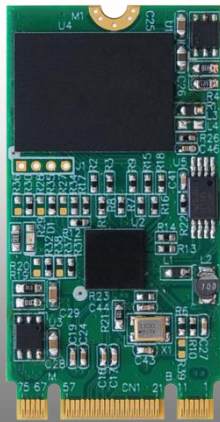


M2EM

M.2 (NGFF) SATA SSD

Product > M.2 interface > M2EM

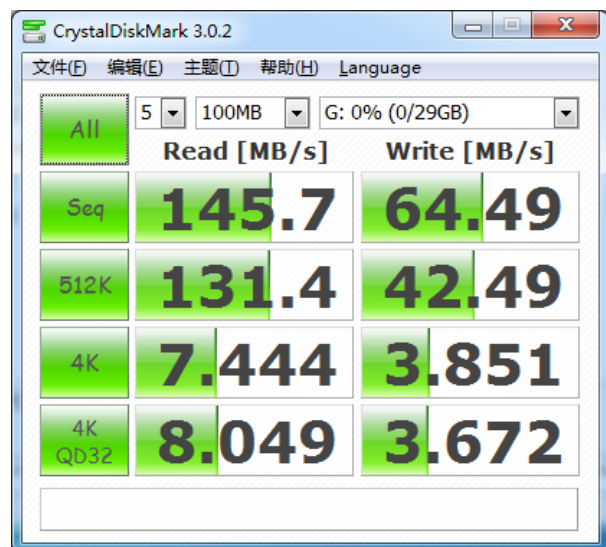


M2EM is an M.2 SATA SSD module with eMMC Flash memory.

M2EM module provides M.2.SATA SSD solution for TYPE 2242-D2-B-M which has Type 2242 with 22 x 42mm size and KeyB or KeyM Socket 2 SATA interface slot.

BayHub OZ788WR2 SATA-eMMC controller achieves not only low power consumption but also high performance by 8bit SDR200 eMMC interface supported by MMCA Ver4.5.

M2EM is the best solution for M.2 SATA eMMC SSD module.



CPU: intel Core i5-4430 3.0/3.2GHz

Main Board: intel Kinsley 75K (Intel Z87 (Lynx Point))

Main Memory : 4 Gbytes

Graphic : intel HD Graphics 4600 (Haswell GT2)

OS: Microsoft Windows 7 SP1 Ultimate 32-bit

M.2 SATA SSD : Bplus M2EM (BayHub OZ788WR2 + eMMC SDR200MHz)

SATA-M.2 Adapter: Bplus SSDM2

Specifications

- M.2 SATA SSD for M.2-Socket2-B+M-2242 slot for SATA SSD
- Compliant with PCIe M.2 Specification Rev 0.9 (As of April 13, 2013)
- Body Size: TYPE 2242-D2-B-M
- Module Key (Edge Connector / Gold Finger): B+M (Both Key B and Key M)
- Interface : M.2 TYPE 2242-D2-B-M (22 x 42 mm size, SATA, Key B & M)
- Compliant with Serial ATA Revision 3.2
- eMMC Support : V4.51, & V4.41, 8bit eMMC HS200
- eMMC interface : 8bit SDR104 (200MB/s) , SDR50 (100MB/s)
- Support Device sleep (DevSlp)

OS Support:

- Transparent to the operating system and does not require any software drivers.

System Requirement:

- *Type 2242 M.2 Socket 2 with Key B or M for SATA*

Notice:

- This adapter is engineering test tools. NOT for home or office use.
- M.2 Rev 0.9 Compliant at present. Specification may vary in newer revision.
- The Products just only support M.2-Socket2-B+M-2242 slot for SATA SSD, Can't support other SSD such as MiniCard (mPCIe), mSATA, Eee PC SSD, Apple MacBook air SSD Card.
- Support SATA interface only. Other interface (such as PCIe or USB) or key (Key A or Key E) isnot supported.

M2EM Package Content



M2EM
(M.2 SATA SSD) x1